

Open End Rivets

Non-structural blind breakstem rivet designed for a wide range of applications. Available in a variety of materials and combinations.



Key features and benefits

- Cost effective standard rivet
- Installed quickly and easily
- Design of the stem head ensures positive retention after installation

Specifications

Sizes:

3/32" – 1/4"

(2.4 mm – 6.4 mm)

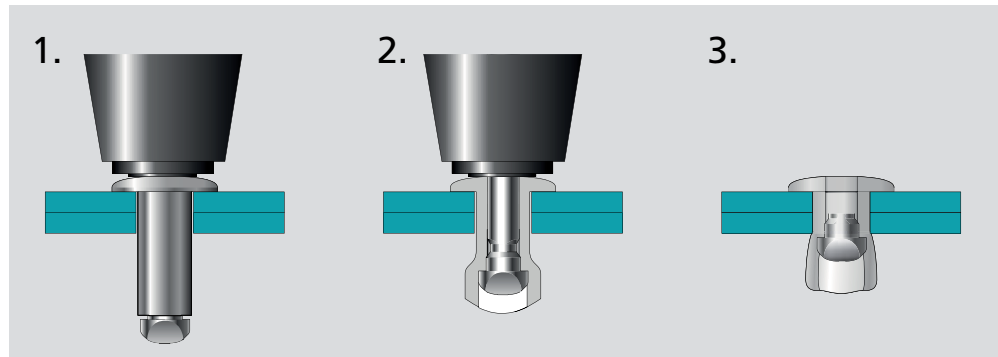
Materials:

Aluminum, Steel,
Stainless Steel, Copper,
Nickel Copper Alloy

Head Styles:

Dome, Large Flange,
Countersunk

Typical placing sequence



Please visit our website for fastener placing animations and technical data.

Assembly applications

- White goods
- Automotive
- Building & construction
- Furniture
- Lighting
- Hearth, grill
- Patio furniture
- Renewable energies

Automotive



White goods



Snowmobile trailer



Lighting equipment



Conference room furnishings

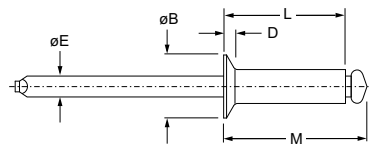


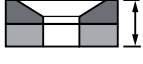
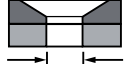


Gutter





English	Français	Deutsch	Italiano	Español
Countersunk	Tête fraisée	Senkkopf	Testa svasata	Cabeza avellanada
Body: Nickel Copper Alloy (Monel) Zinc plated	Corps: Alliage de nickel cuivre (Monel) Revêtement zingué	Hülse: Nickel Kupfer Legierung (Monel) Verzinkt	Corpo: Lega di nickel rame (Monel) Zincato	Cuerpo: Aleación de níquel cobre (Monel) Zincado
Stem: Steel Zinc plated	Tige: Acier Revêtement zingué	Dorn: Stahl Verzinkt	Gambo: Acciaio Zincato	Vástago: Acero Zincado



Ø					L	M	ØE	ØB	D			Part No.
nom.	min.	max.	min.	max.	ref.	ref.	ref.	max.	max.	lbf (kN) ¹⁾	lbf (kN) ¹⁾	
7/64" (2.8)	.0 (0)	.090 (2.3)	.113 (2.87)	.117 (2.97)	.215 (5.5)	.315 (8.0)	.072 (1.8)	.205 (5.3)	.038 (1.0)	258 (1.15)	292 (1.30)	MK 319 BS
	.090 (2.3)	.109 (2.8)			.234 (6.0)	.334 (8.5)						MK 321 BS
1/8" (3.2)	.0 (0)	.098 (2.5)	.130 (3.3)	.134 (3.4)	.227 (5.8)	.347 (8.8)	.076 (1.9)	.244 (6.2)	.039 (1.0)	337 (1.50)	427 (1.90)	TLPK 419 BS
	.098 (2.5)	.148 (3.8)			.273 (7.0)	.393 (10.0)						TLPK 424 BS
	.148 (3.8)	.199 (5.1)			.332 (8.5)	.452 (11.5)						TLPK 429 BS
	.199 (5.1)	.259 (6.6)			.391 (10.0)	.511 (13.0)						TLPK 435 BS
	.259 (6.6)	.309 (7.9)			.438 (11.2)	.558 (14.2)						TLPK 440 BS
5/32" (4.0)	.129 (3.3)	.188 (4.8)	.161 (4.1)	.165 (4.2)	.340 (8.7)	.480 (12.2)	.090 (2.3)	.270 (6.9)	.042 (1.1)	495 (2.20)	674 (3.00)	TLPK 530 BS
	.188 (4.8)	.258 (6.6)			.410 (10.5)	.550 (14.0)						TLPK 537 BS
	.258 (6.6)	.289 (7.4)			.441 (11.3)	.581 (14.8)						TLPK 540 BS

dimensions in inches and (mm) / en pouces et (millimètre) / alle Maße in Zoll und (mm) / in pollici e (millimetri) / en pulgadas y (milímetros)

1) typical values / valeurs moyennes / typische Werte / Valori tipici / valores típicos